



**SUPERIOR
GOLD INC.**

TSX.V – SGI

All amounts expressed in US\$ unless otherwise stated



INVESTMENT HIGHLIGHTS

- Continuous production at Plutonic Gold mine since 1990
- Historical production of >5.5 million ounces (a big system!)
- Demonstrated ability to generate free cash flow → Purchase price of AU\$40 million recouped in 15 months
- Substantial investment in infrastructure with replacement value of >\$2.5 billion
- Outstanding exploration potential with near mine exploration targets close to infrastructure
- Strong re-valuation opportunity



COMPANY OVERVIEW

Superior Gold Inc. is a Canadian based gold producer that owns and operates 100% of the Plutonic Gold operations located in the world class goldfields of Western Australia. The Plutonic Gold operations include the Plutonic underground gold mine, the Hermes open pit projects and an interest in the Bryah Basin joint venture. The Plutonic mine has been in continuous production since 1990 and, having produced more than 5.5 million ounces of gold, is one of Western Australia's largest historic gold producers.

In 2018, the Company achieved record production of over 90,000 ounces of gold and in 2019 is targeting a further increase in production.

The Company is focused on true shareholder returns and operating as a business first and a gold company second.

MANAGEMENT

Chris Bradbrook – President & CEO
Paul Olmsted – VP Finance and CFO
Keith Boyle – Chief Operating Officer
Pascal Blampain – Chief Geologist
Brian Szeto – VP Communications & Strategy

BOARD OF DIRECTORS

Mark Wellings – Chairman
Chris Bradbrook – President & CEO
Tamara Brown
René Marion
Michael Mulronev

MAJOR SHAREHOLDERS

Northern Star – 18.9%
CI Financial – 13.62%
Greywolf – 8.2%
Board and Management – 8.0%
Donald Smith – 3.0%
U.S. Global – 1.8%
SSI Wealth – 1.8%

SHARE STRUCTURE (as of Jun. 28, 2019)

Symbol – SGI (TSX-V)
Share Price – C\$0.71
Shares Outstanding – 97.0M
Fully Diluted – 97.0M

FINANCIAL & OPERATING RESULTS

(6 months ended Jun. 30, 2019)
Production – 46,324 oz Au
Sold – 46,441 oz Au
Total Cash Costs – \$1,185/oz
All in Sustaining Costs – \$1,270/oz
Cash & Equivalents – \$17.3M
Debt – nil

Toronto Office
70 University Ave, Suite 1410
Toronto, ON
Canada, M5J 2M4
(647) 925-1293

Perth Office
Level 1, 30 Richardson Street
West Perth 6005
WA, Australia
08 6324 0000

SUPERIOR-GOLD.COM
investor@superior-gold.com

RESERVES

(as at December 31, 2018)

	Tonnes (MT)	Grade (g/t Au)	Gold (Koz)
Plutonic			
Proven and Probable	2.26	4.73	343
Hermes			
Proven and Probable	1.51	1.32	64
Stockpiles			
Proven and Probable	0.23	0.94	7
TOTAL PROVEN AND PROBABLE	4.00	3.22	414

Mineral Reserves as at December 31, 2018 were estimated using a long term gold price of A\$1,650 per ounce (US\$1,217 per ounce).

Mineral Resources as at December 31, 2018 were estimated using a long term gold price of A\$1,700 per ounce (US\$1,254 per ounce).

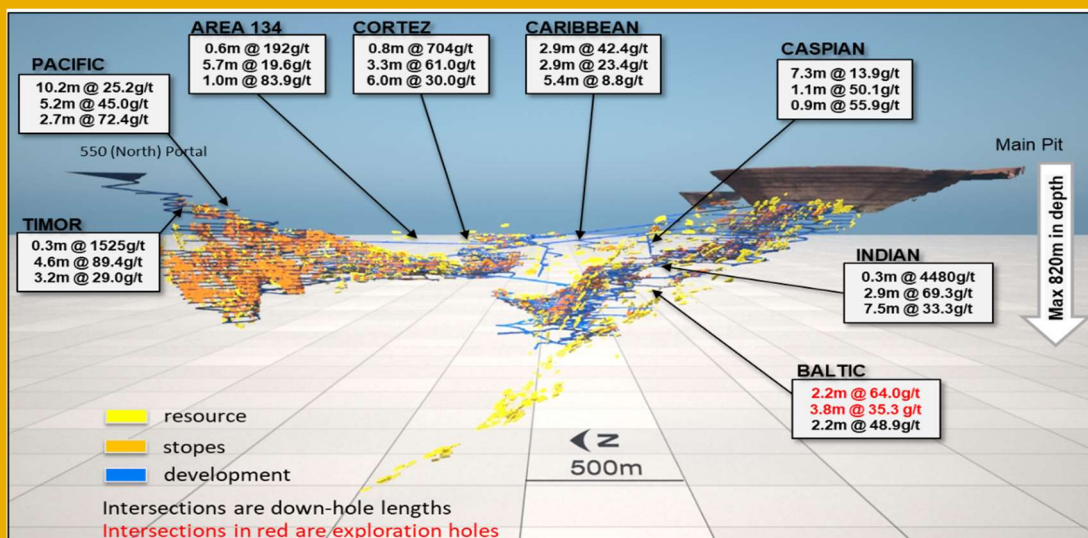
RESOURCES (Inclusive of Reserves)

(as at December 31, 2018)

	Tonnes (MT)	Grade (g/t Au)	Gold (Koz)
Plutonic			
Measured and Indicated	4.73	6.59	1,001
Inferred	10.45	4.90	1,645
Hermes			
Measured and Indicated	4.70	1.46	221
Inferred	4.00	1.40	180
Stockpiles			
Measured and Indicated	0.23	0.94	7
TOTAL MEASURED AND INDICATED	9.65	3.96	1,229
TOTAL INFERRED	14.45	3.93	1,825

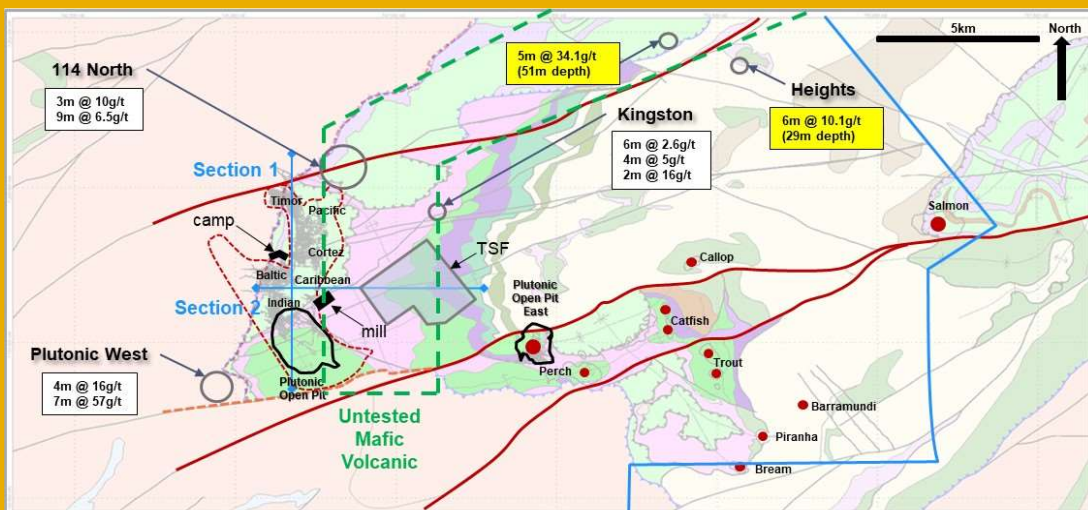
Plutonic Gold Mine

- Strong mineralized system with potential to expand existing resource
- Numerous high-grade intercepts obtained from both infill and exploration drill holes
- Average depth of the mine is only 450 metres with current mining taking place at the 250 metre level
- Many near surface and underground exploration targets



Near Mine Exploration Targets

- Large areas of untested mafic volcanic
- Historic open pit expansion / underground potential
- Development would require low capital and short lead time



Scientific and technical information in this fact sheet has been reviewed and approved by Pascal Blampain, who is a member of the AusIMM and the Australian Institute of Geoscientists (AIG) and a "qualified person" within the meaning of NI 43-101. Mr. Blampain is an employee of the Company and serves as Chief Geologist.

An updated NI 43-101 Technical Report effective December 31, 2018 is available on the Company's SEDAR profile at www.sedar.com.

Certain of the statements made may contain forward-looking statements which involve known and unknown risk, uncertainties and other factors which may cause the actual results, performance or achievements of the Company to be materially different from any future results, performance or achievements expressed or implied by such forward-looking statements. See the Company's prospectus dated February 15, 2017 filed on SEDAR for additional information on risks, uncertainties and other factors relating to the forward looking statements.